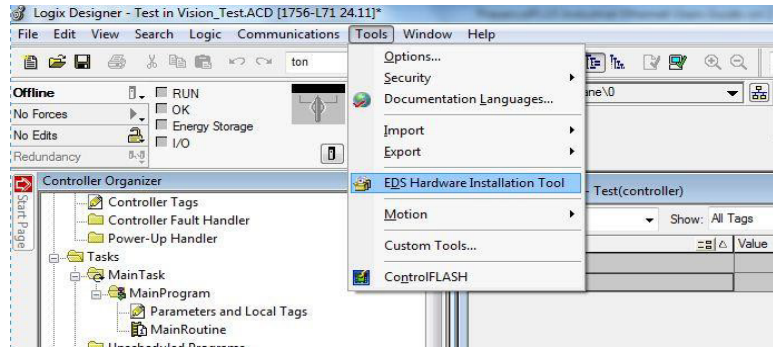


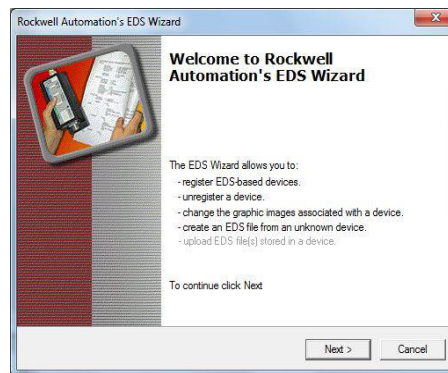
DXM ControlLogix EtherNet/IP Configuration Using EDS File

Use the DXM EDS file to create a connection on a ControlLogix PLC

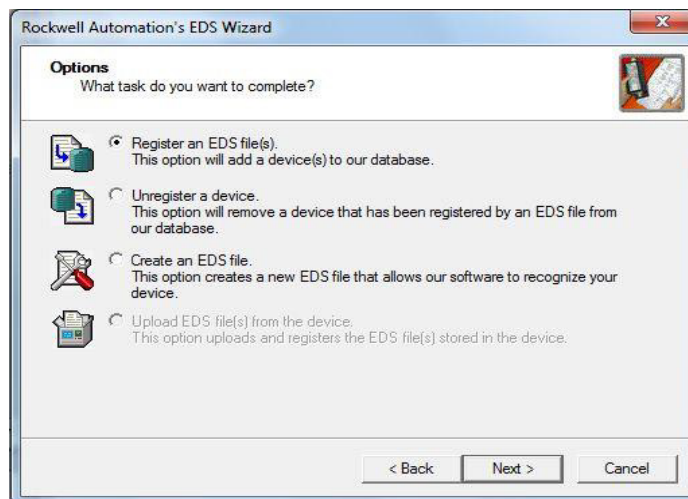
1. Use the EDS Hardware Installation Tool to register the EDS file.



2. Click Next.

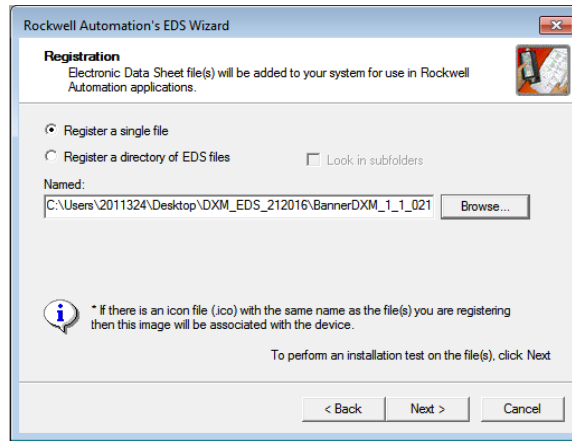


3. Choose the "Register and EDS file(s)" option and click Next.

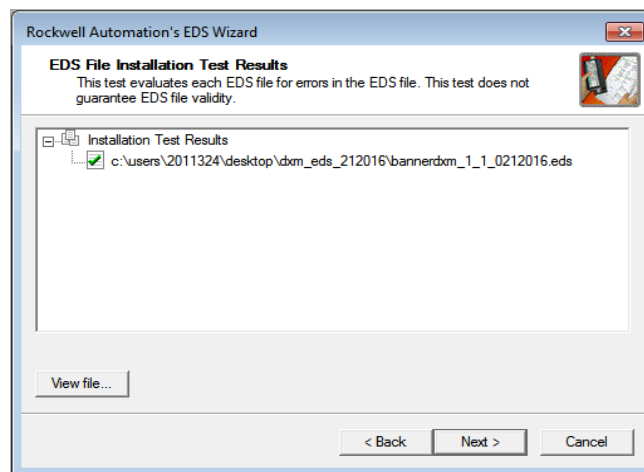


DXM EIP on ControlLogix

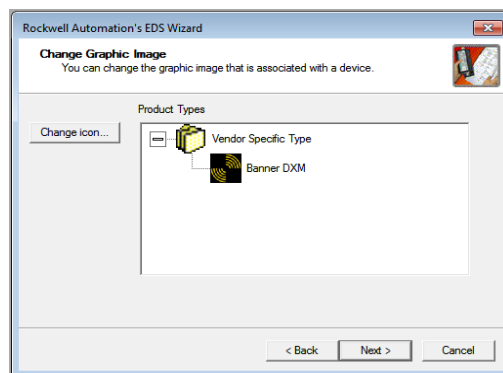
4. Browse to find the EDS file, then click Next.



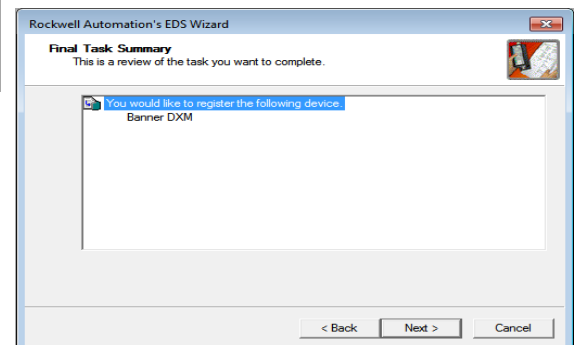
5. The file has been tested and can be registered. Click Next.



6. Here is the icon associated with the EDS file. Click Next.

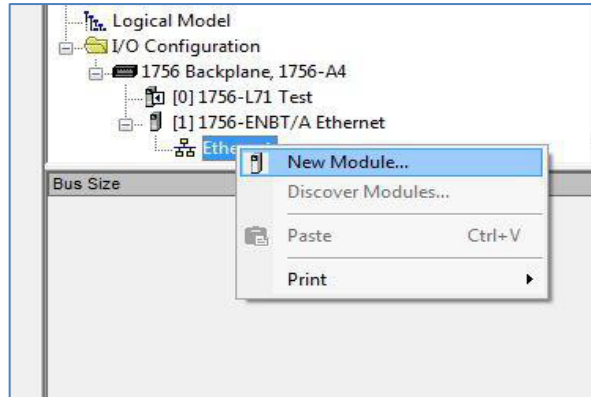


7. Everything looks good. Click Next to register this EDS file.
8. Click Finish. You have successfully completed the EDS Wizard. The EDS file is now registered in the Rockwell software.

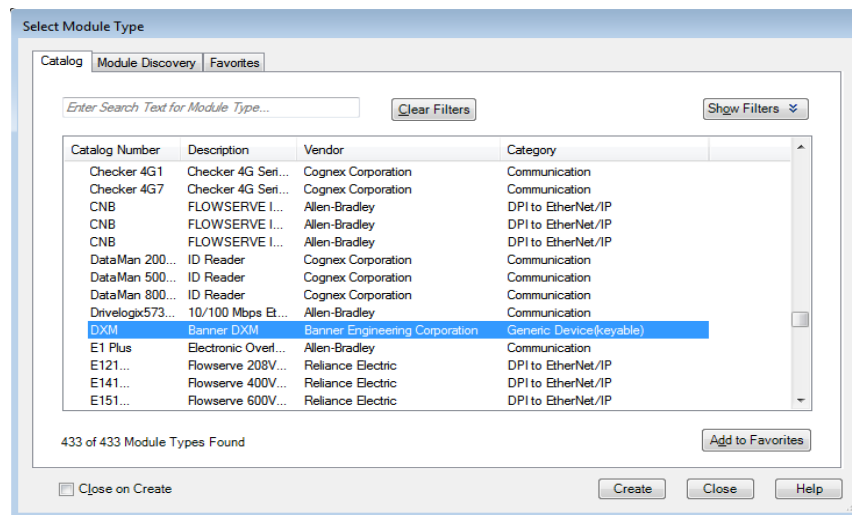


Make a new module using the EDS file.

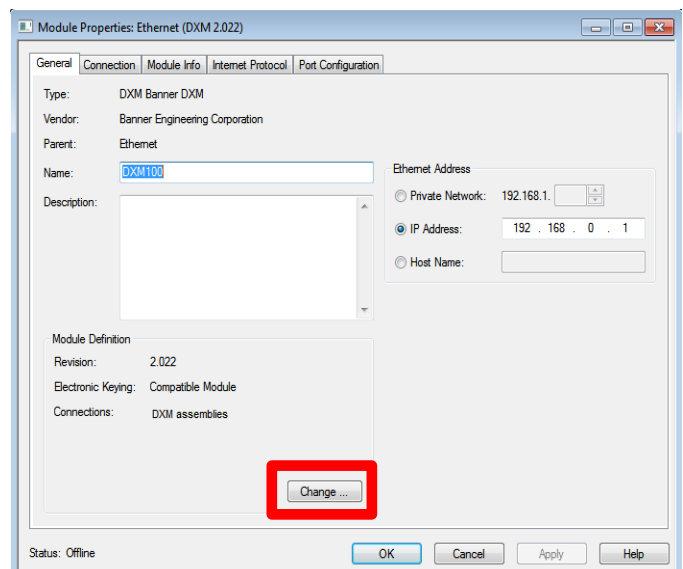
1. Right click on the PLC's Ethernet adapter and choose "New Module".



2. From the list, locate "DXM" then click Create.

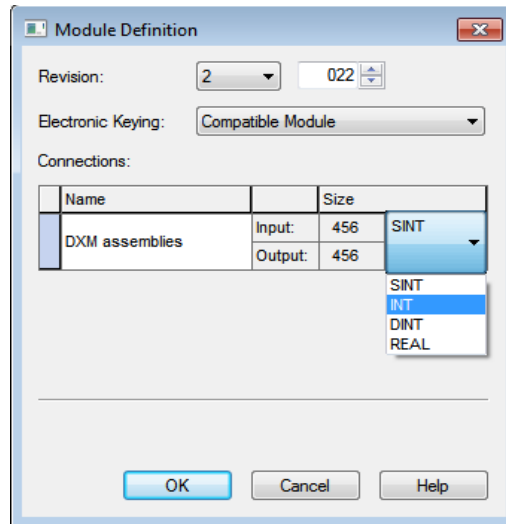


3. Fill in a name, optional description, and IP address for the DXM. Then click the "Change" button in the Module Definition box.



DXM EIP on ControlLogix

4. Select INT as the data type. For DXMR90-4K and DXMR110-8K IO-link Master Models, select SINT as the data type.



5. Click OK, then OK again and download the program to the PLC. The connection will look like that seen below.

